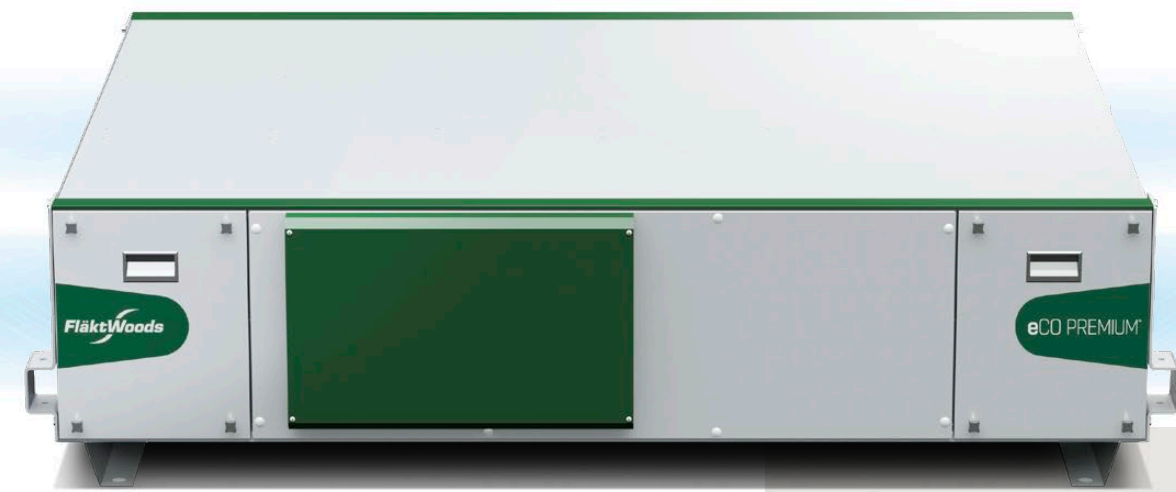




# eCO PREMIUM™ by FLÄKT WOODS – THE ENERGY RECOVERY UNIT PROOF THAT GREAT THINGS COME IN SMALL PACKAGES



**OUR NEW eCO PREMIUM™ IS COMPACT, BUT PACKED FULL OF FEATURES.** When investing in a new ventilation unit with heat recovery today, you could – and should – go for the highest standards. Clean, fresh air. High efficiency and low noise. Elaborate electronic control. Minimised maintenance. And, most importantly, extremely high energy performance.

We have managed to pack all these features in a compact casing, so our new eCO PREMIUM™ has a size that will fit even the tightest spaces – perfect for false ceiling installations – and economical, with a solution to fit all budgets.

## 4 GREAT THINGS

- Energy efficient components and over 85% heat recovery rate (EN308)
- Extremely low noise, less than 24 dBA
- Compact L2-classed casing as standard, with all connections on the sides
- eCO PREMIUM is a perfect solution for relatively small spaces, for instance classrooms and other school applications

## WE BRING BETTER AIR™ TO LIFE

With over a century of innovation and expertise to share with our customers, Fläkt Woods is a global leader in Air Technology products and solutions. We specialise in the design and manufacturing of a wide range of products and solutions for Air Movement, Air Treatment, Air Distribution, Air Management and Air Diffusion with focus on two major benefits – **Air Comfort** and **Fire Safety**. With market presence in 65 countries we are in a unique position to be a local supplier and an international partner in our customer's projects.

Our product brands such as SEMCO®, eQ®, eQ Prime®, JM Aerofoil®, Econet®, Veloduct®, Optivent®, Optimix®, Econovent® and Cleanvent® are well-known and trusted by customers all over the world to deliver high quality and energy efficient solutions.

» To learn more about our offering and get in contact with your nearest sales representative please visit [www.flaktwoods.com](http://www.flaktwoods.com)



**Save Energy,  
Economy and  
Environment  
with Fläkt Woods**



Energy optimisation is an important aspect of creating a healthy and cost-effective indoor climate, and an area in which Fläkt Woods has acclaimed expertise. We use the symbol e<sup>3</sup> to highlight products and solutions that are particularly effective. They serve a dual purpose of saving both your long-term economy and our environment. » [flaktwoods.com/energy](http://flaktwoods.com/energy)





# Regardless of what you're looking for, eCO PREMIUM™ is the right solution

eCO PREMIUM™ is built not only of top class components, but also on 100 years of ventilation expertise. Through our history we have been asked to deliver air into a wide range of applications, from hotels, industrial facilities, large offices, hospital and educational buildings. We have used all this collective experience and our best engineers to develop the eCO PREMIUM™.

The eCO PREMIUM™ energy recovery unit is designed to provide perfect comfort and the highest energy efficiency to a wide range of applications. It fits equally well to the demands in for instance a classroom, a gym, offices, shops, hotels or apartments. To fit different demands it is available in 6 different sizes or air flow capacities, from 0,2–0,9 m³/s. You can choose to equip the eCO PREMIUM™ with post heater with hot water or electric and you can choose electric pre-heater to suit your need even better.

» Read more about eCO PREMIUM™ at [flaktwoods.com](http://flaktwoods.com)



## BEHIND THE SCENES OF A STUNNING PERFORMANCE

Every detail has been carefully considered in the design and construction of our eCO PREMIUM™ in order to achieve its overall performance. Using the finest components and a meticulous design process contribute to it's class leading features. We looked at the whole system and refined how all components interact together. Finally, energy efficiency, versatility, controllability, air quality and high comfort levels were all important considerations in the design process.



### TOTAL CONTROL ON COMFORT AND ENERGY

The integrated Fläkt Woods CURIO™ control is the starting point of controlling the performance of eCO PREMIUM™. All the advanced features are easily available in the self-explanatory and user friendly CURIO™ Touch control panel. In larger installations it can also be remote managed via the inbuilt Modbus/RS485 communication interface (or TCP/IP as an option). Optional fully automatic control can further enhance comfort and energy efficiency through Demand Controlled Ventilation.

- User friendly touch screen
- Calendar
- Fan control and alarm
- BMS-compatibility

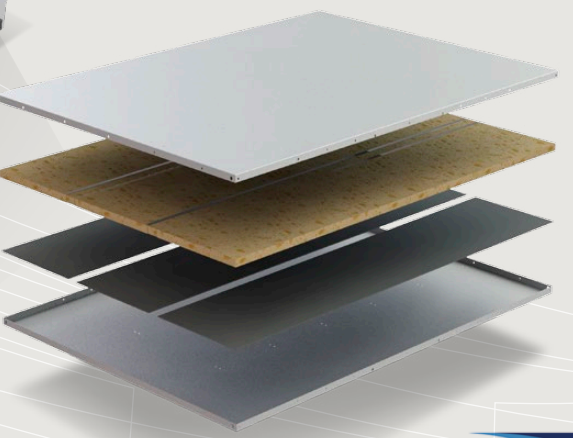
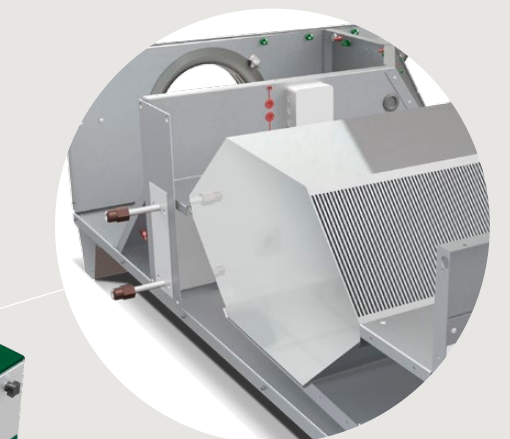
### Demand Controlled Ventilation – for even greater savings

When equipped with sensors eCO PREMIUM™ can automatically adjust to changing demands within the room. A presence detector can switch it on when the room is occupied and off when it's empty. With an internally mounted and wired CO<sub>2</sub> sensor it can adjust the air supply proportionally to the number of people in the room. The best solution for both comfort and energy savings, reducing overall energy consumption.



### THE MOST ENERGY EFFICIENT COMPONENTS

eCO PREMIUM™ is equipped with energy efficient components like infinitely adjustable EC-motor fans. The counterflow heat exchanger is Eurovent certified and recovers over 85% of the thermal energy at nominal airflow (according to EN308). A 100% summer bypass is fitted as standard.



### LOW NOISE (BSRIA TESTED)

All eCO PREMIUM™ units are designed for minimised noise levels, but an even more quiet acoustic model is also available for sizes 1–4. This is an ideal choice for applications where a low noise is a requirement, for instance in schools, recording studios and radio stations.

### SIMPLE MAINTENANCE

Maintenance is made simple through several design features. All regular service points are gathered on one side. No tools are needed to change the filter. Fans are easily accessible for service and maintenance.

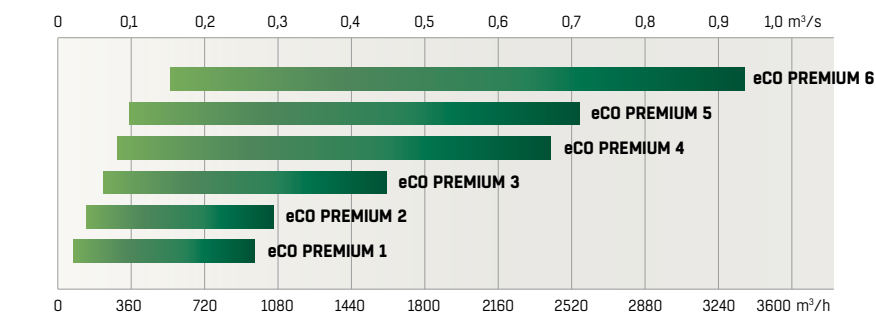
### HIGH AIR QUALITY

The eCO PREMIUM™ comes standard with highly efficient filters for both supply and exhaust air streams. Choose between G4/G4- or M5/F7-class delivery options.

### COMPACT FULL-FEATURED CASING

The compact casing (patent pending) of eCO PREMIUM™ is small but fully featured. The unit is air tightness L2 leakage compliant. Materials fulfills C3 class in corrosivity resistance. The outdoor version is fully weatherproof.

## Available in 6 sizes



eCO PREMIUM™ is available in 6 sizes providing from 0,2–0,9 m³/s of air flow. A range appropriate for a wide range of applications and building sizes.

Size*	Length (mm)	Width (mm)	Height (mm)	Weight "Standard" (kg)	Weight "Acoustic" (kg)	Spigot Ø (mm)
1	1700	1220	380	198	217	250
2	1700	1220	380	200	219	250
3	1900	1520	425	263	294	250
4	1900	1520	425	269	300	250
5	2000	1720	470	280	–	315
6	2480	1720	685	495	–	500

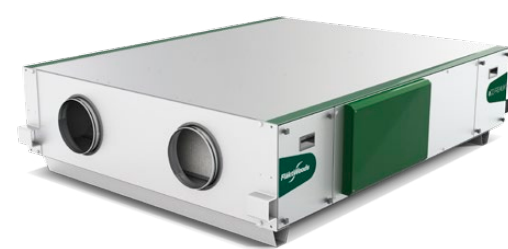
\*Essential models



### QUICK AND EASY SELECTION

Our range of selection tools is amongst the most comprehensive of its kind in the world. They are both powerful and easy to use, to ensure that you can always find the optimum and most energy efficient product for your application.

» Get access to all our selection tools at [www.flaktwoods.com](http://www.flaktwoods.com)



## eCO PREMIUM™ by Fläkt Woods – available in 3 different versions

eCO PREMIUM™ is available in three version, where the efficient heat recovery unit is common to all models. It can also be ordered with post heater (water or electric) or with post and pre-heater for temperatures between -5 and -15 C°. All models are equipped with CURIO™ Touch control, fully automatic Thermo Ice™ defrosting and can also be used for cooling with external coils.\*

Essential	Enhanced	Elite
<input type="checkbox"/>	<input type="checkbox"/>	<input type="checkbox"/>
<input type="checkbox"/>	<input type="checkbox"/>	<input type="checkbox"/>
<input type="checkbox"/>	<input type="checkbox"/>	<input type="checkbox"/>
<input type="checkbox"/>	<input type="checkbox"/>	<input type="checkbox"/>
<input type="checkbox"/>	<input type="checkbox"/>	<input type="checkbox"/>
<input type="checkbox"/>	<input type="checkbox"/>	<input type="checkbox"/>
<input type="checkbox"/>	<input type="checkbox"/>	<input type="checkbox"/>
<input type="checkbox"/>	<input type="checkbox"/>	<input type="checkbox"/>

\* optional equipment

