



CA MD E W RANGE

Centrifugal duct fans for wall mounting

PRODUCT SPECIFICATIONS



LONG LIFE 30.000 h



Suitable for indoor wall-mounted applications at the end of ventilation ducts in residential and industrial environments as factories, hospitals, gyms, restaurants, etc...

- **8 models:** CA 100 MD E W, CA 125 MD E W, CA 150 Q MD E W, CA 150 MD E W, CA 160 MD E W, CA 200 MD E W, CA 250 MD E W, CA 315 MD E W.
- Stripped and phosphated steel structure, bands and bases, painted with polyester powder which is resistant to atmospheric agents.
- Induction motor manual reset thermal protection device for diameters 100, 125 and 150 Q.
- Induction motor with external rotor, manual reset thermal protection device for diameters 150, 160, 200, 250 and 315.
- High efficient, two speeds (offer two levels of airflow, pressure, noise emissions and consumption) ball bearing motors.
- Low noise emissions.
- Low specific consumption.
- Motor supports with built-in airflow direction flaps in resin plastic material with high structural strength.
- Wiring box in plastic material with high structural strength.
- Centrifugal impellers with reverse blades in charged PP for diameters 100, 125 and 150 Q, and in charged PA for diameters 150, 160, 200 and 250.
- Wide range of continuous operation temperatures between -25°C and +55°C.
- Protection rating: IP44.
- Insulation class: II □ □.

TECHNICAL DATA

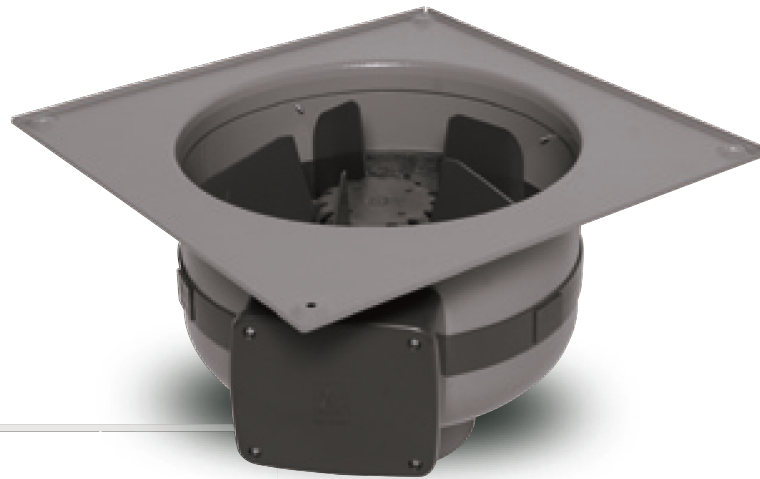
Models	Code	W min/max	A min/max	RPM min/max	Max Airflow		Max Pressure		Lp dB(A)* min/max	Max °C	Kg
					m ³ /h min/max	l/s min/max	mmH ₂ O min/max	Pa min/max			
CA 100 MD E W	16120	38 - 85	0.28 - 0.40	1520 - 2400	250 - 470	69 - 130	26 - 37	255 - 363	19.2 - 35.7	50	3.3
CA 125 MD E W	16121	38 - 85	0.28 - 0.40	1300 - 2350	300 - 490	83 - 136	23 - 36	225 - 353	25.5 - 39.4		
CA 150 Q MD E W	16122	38 - 85	0.28 - 0.40	1460 - 2340	305 - 510	85 - 142	20 - 32	196 - 314	28.3 - 38.0		
CA 150 MD E W	16133	45 - 85	0.37 - 0.38	1925 - 2690	480 - 630	133 - 175	37 - 43	363 - 422	41.4 - 53.3	55	5.5
CA 160 MD E W	16134	45 - 85	0.37 - 0.38	1785 - 2650	570 - 690	158 - 191	35 - 43	343 - 422	43.0 - 53.0		
CA 200 MD E W	16135	45 - 90	0.37 - 0.40	1590 - 2590	590 - 870	164 - 241	39 - 45	382 - 441	37.9 - 48.2		
CA 250 MD E W	16136	58 - 125	0.51 - 0.55	1450 - 2620	595 - 1000	165 - 278	40 - 54	392 - 530	31.6 - 50.8		
CA 315 MD E W	16137	58 - 125	0.51 - 0.55	1500 - 2650	600 - 1050	167 - 292	37 - 56	363 - 549	41.2 - 51.4		11

* Sound pressure level measured at 3 m in free field conditions with long-cased appliance in delivery mode in accordance with standard EN ISO 9614.

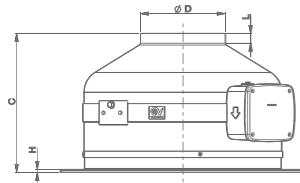
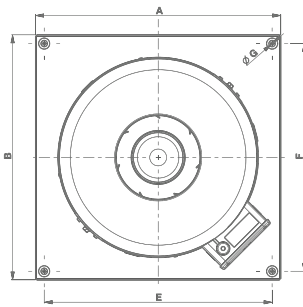
Electrical supply: 230 V - 50 Hz.



CA MD E W
RANGE



DIMENSIONS



Models	A	B	C	Ø D	E	F	Ø G	H	L
CA 100 MD E W	334	334	210	97	304	304	5	5	15
CA 125 MD E W				122					23
CA 150 Q MD E W				147					30
CA 150 MD E W	424	424	245	147	394	394	5	5	17
CA 160 MD E W				157					18
CA 200 MD E W				197					20
CA 250 MD E W				237					247
CA 315 MD E W	489	489	260	312	459	459	5	5	36

Dimensions (mm)

PRODUCT ACCESSORIES

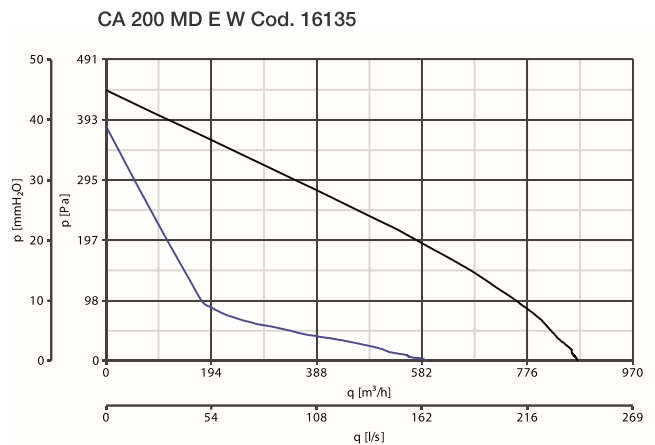
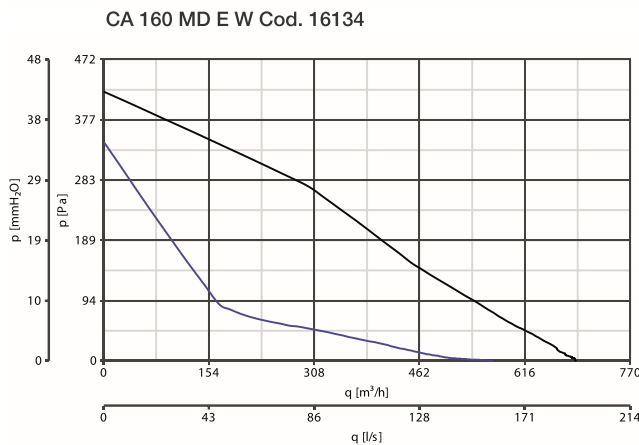
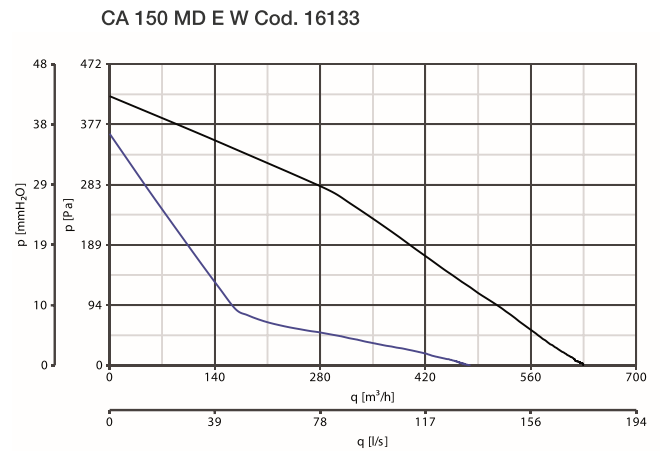
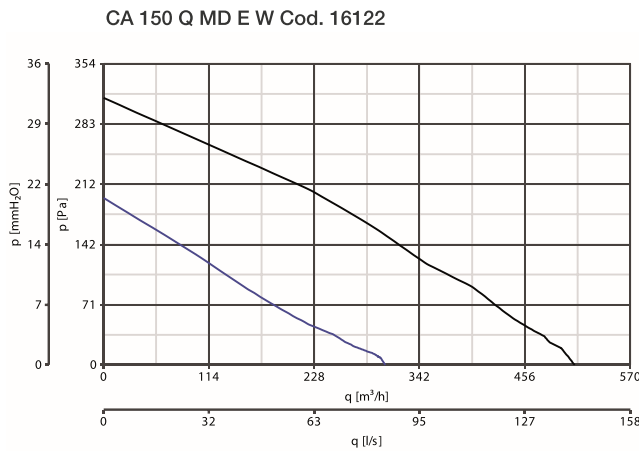
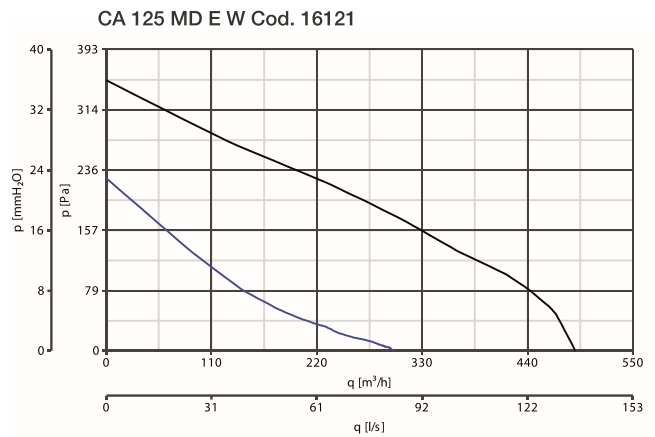
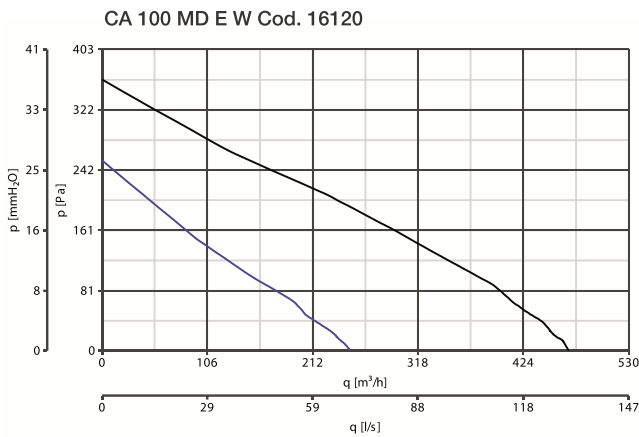
	Description	Code	Product
	C HCS Environmental sensor for humidity	12994	All products
	C PIR Passive infrared sensor	12998	
	C SMOKE Environmental sensor for air quality	12993	
	C TEMP Environmental sensor for temperature	12992	
	C TIMER Adjustable over-run timer	12999	
	DUO Speed controller	22914	16120 - 16121 - 16122
	C 1.5 Electronic speed controller 1.5 A	12966	All products
	C 2.5 Electronic speed controller 2.5 A	12967	
	KIT SCB Built-in controller adaptors for C 1.5 and C 2.5	22481	12966 - 12967
	CA-G 100 Protection grille nominal diameter 100 mm	22750	16120
	CA-G 125 Protection grille nominal diameter 125 mm	22755	16121
	CA-G 150 Protection grille nominal diameter 150 mm	22760	16122 - 16133
	CA-G 160 Protection grille nominal diameter 160 mm	22762	16134
	CA-G 200 Protection grille nominal diameter 200 mm	22765	16135
	CA-G 250 Protection grille nominal diameter 250 mm	22770	16136
	CA-G 315 Protection grille nominal diameter 315 mm	22775	16137



CA MD E W RANGE

Centrifugal duct fans for wall mounting

PERFORMANCE CURVES

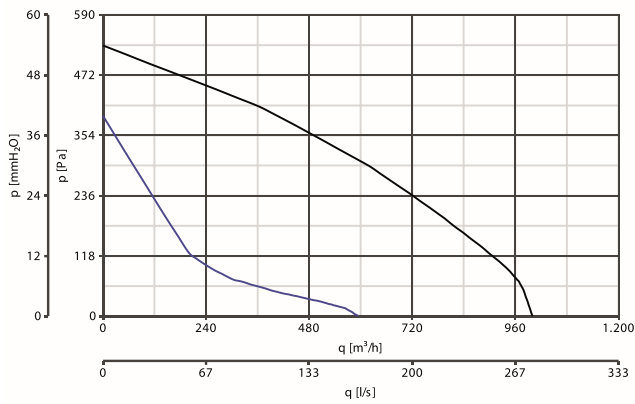




CA MD E W
RANGE

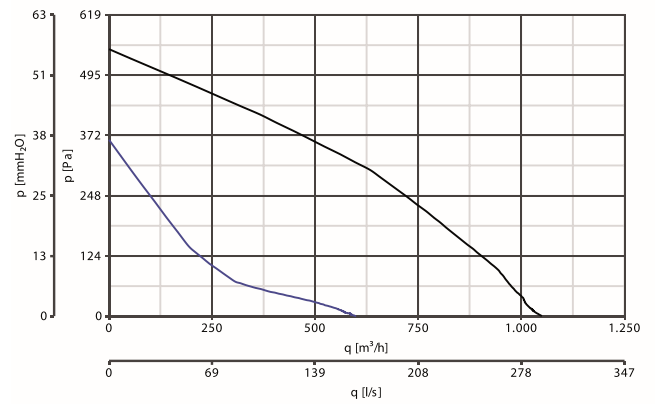
PERFORMANCE CURVES

CA 250 MD E W Cod. 16136



— min. — max.

CA 315 MD E W Cod. 16137





NEW

CA MD W EP RANGE

Centrifugal duct fans for wall mounting

PRODUCT SPECIFICATIONS



LONG LIFE 30.000 h



Suitable for indoor wall-mounted applications at the end of ventilation ducts in residential and industrial environments as factories, hospitals, gyms, restaurants, etc...

- **8 models:** CA 100 MD E W, CA 125 MD E W, CA 150 Q MD E W, CA 150 MD E W, CA 160 MD E W, CA 200 MD E W, CA 250 MD E W, CA 315 MD E W.
- Stripped and phosphated steel structure, bands and bases, painted with polyester powder which is resistant to atmospheric agents.
- Induction motor manual reset thermal protection device for diameters 100, 125 and 150 Q.
- Induction motor with external rotor, manual reset thermal protection device for diameters 150, 160, 200, 250 and 315.
- High efficient, two speeds (offer two levels of airflow, pressure, noise emissions and consumption) ball bearing motors.
- Low noise emissions.
- Low specific consumption.
- Motor supports with built-in airflow direction flaps in resin plastic material with high structural strength.
- Wiring box in plastic material with high structural strength.
- Centrifugal impellers with reverse blades in charged PP for diameters 100, 125 and 150 Q, and in charged PA for diameters 150, 160, 200 and 250.
- Wide range of continuous operation temperatures between -25°C and +55°C.
- Protection rating: IP44.
- Insulation class: II □ .

TECHNICAL DATA

Models	Code	W min/max	A min/max	RPM min/max	Max Airflow		Max Pressure		Lp dB(A)* min/max	Max °C	Kg
					m³/h min/max	l/s min/max	mmH ₂ O min/max	Pa min/max			
CA 100 MD W EP	16229	12 - 85	0.13 - 0.40	970 - 2450	160 - 400	44.4 - 111.1	26.8 - 38.8	262.3 - 380.1	19.2 - 35.7	50	3.3
CA 125 MD W EP	16230	12 - 85	0.13 - 0.40	935 - 2445	160 - 445	44.4 - 123.6	13.9 - 36.2	136.5 - 355.9	25.5 - 39.4		
CA 150 Q MD W EP	16231	12 - 85	0.13 - 0.40	965 - 2435	168 - 455	46.6 - 126.3	7.1 - 32.5	69.5 - 318.7	28.3 - 38.0		
CA 150 MD W EP	16232	39 - 85	0.34 - 0.38	1740 - 2690	400 - 617	111.1 - 171.3	31.6 - 43.8	310.4 - 429.7	41.4 - 53.3	55	5.5
CA 160 MD W EP	16233	38 - 85	0.35 - 0.38	1570 - 2680	385.8 - 665	107.1 - 184.7	28.0 - 42.4	275.1 - 416.7	43.0 - 53.0		
CA 200 MD W EP	16234	39 - 90	0.35 - 0.40	1455 - 2630	455 - 825	126.3 - 229.1	34.3 - 44.0	337.1 - 432.3	37.9 - 48.2		
CA 250 MD W EP	16235	48 - 125	0.48 - 0.55	1340 - 2675	500 - 1030	138.8 - 286.1	34.9 - 55.9	342.3 - 548.3	31.6 - 50.8		
CA 315 MD W EP	16236	48 - 125	0.48 - 0.55	1335 - 2670	490 - 1030	136.1 - 286.1	35.7 - 58.2	350.5 - 570.8	41.2 - 51.4		11

* Sound pressure level measured at 3 m in free field conditions with long-cased appliance in delivery mode in accordance with standard EN ISO 9614.

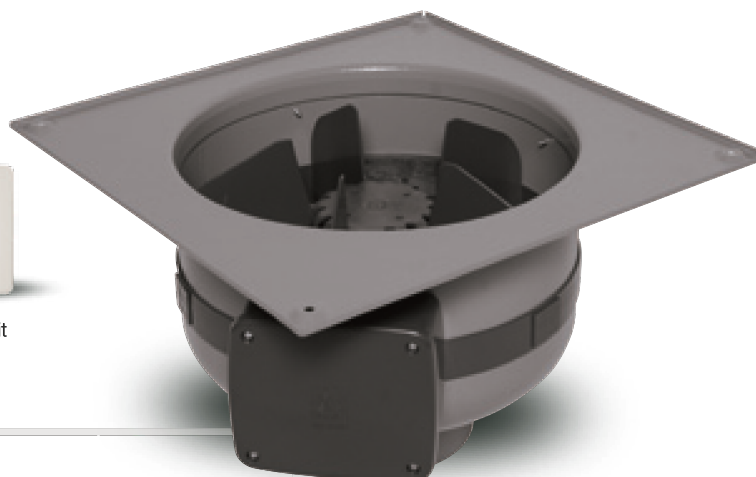
Electrical supply: 230 V - 50 Hz.



CA MD W EP
RANGE



Remote Control Unit
included



CA MD W EP RANGE | TECHNICAL DATA FOR REGULATION N° 1254/2014/UE

	Models	CA 100 MD W EP	CA 150 Q MD W EP	CA 150 MD W EP	CA 150 WE D EP
	Code	16229	16230	16231	16232
Supplier's name or trade mark	-	Vortice	Vortice	Vortice	Vortice
Nominal NRVU flow rate	m ³ /s	0,10994	0,12206	0,12328	0,17025
Effective electric power input [kW]	kW	0,05	0,05	0,05	0,081
Declared typology	-	NRVU-U	NRVU-U	NRVU-U	NRVU-U
Type of drive	-	MSD	MSD	MSD	MSD
Type of heat recovery system HRS	-	None	None	None	None
SFPint	W/(m ² /h)	150,59	-23,74	-168,67	353,75
Face velocity at design flow rate	m/s	14	9,9	6,9	9,6
Nominal external pressure (?ps, ext) [Pa]	Pa	88	108	137	59
Internal pressure drop of ventilation components (?ps,int)		44	-6	-40	171
Internal pressure drop of non-ventilation components (?ps,add)		0	0	0	0
Static efficiency of fans used in accordance with Regulation (EU) N. 327/2011	%	29	24,9	23,9	48,2
Declared maximum internal leakage rate of the casing of ventilation units		N.A.	N.A.	N.A.	N.A.
Declared maximum external leakage rate of the casing of ventilation units		N.A.	N.A.	N.A.	N.A.
Energy performance energy or classification of the filters	-	N.A.	N.A.	N.A.	N.A.
Description of visual filter warning	-	-	-	-	-
Casing sound power level	LWA [dB(A)]	36	39	38	53

* RVU-U: Unit Ventilation Residential - Unidirectional

** NRVU-U: Unit Ventilation Non Residential - Unidirectional

*** MSD: Multi-Speed Drive



CA MD W EP RANGE

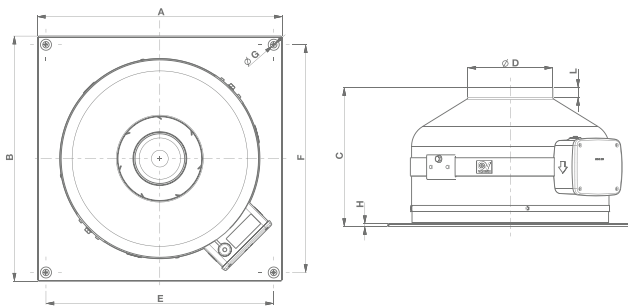
Centrifugal duct fans for wall mounting

CA MD W EP RANGE | TECHNICAL DATA FOR REGULATION N° 1254/2014/UE

	Models	CA 160 MD W EP	CA 200 MD W EP	CA 250 MD W EP	CA 150 WE D EP
	Code	16233	16234	16235	16232
Supplier's name or trade mark	-	Vortice	Vortice	Vortice	Vortice
Nominal NRUV flow rate	m³/s	0,18356	0,22633	0,28222	0,28083
Effective electric power input [kW]	kW	0,083	0,088	0,127	0,127
Declared typology	-	NRVU-U	NRVU-U	NRVU-U	NRVU-U
Type of drive	-	MSD	MSD	MSD	MSD
Type of heat recovery system HRS	-	None	None	None	None
SFPint	W/(m³/h)	345,29	-55,9	84,89	26,6
Face velocity at design flow rate	m/s	9,1	7,2	5,7	3,6
Nominal external pressure (?ps, ext) [Pa]	Pa	49	128	108	128
Internal pressure drop of ventilation components (?ps,int)		158	-16	25	8
Internal pressure drop of non-ventilation components (?ps,add)		0	0	0	0
Static efficiency of fans used in accordance with Regulation (EU) N. 327/2011	%	45,9	28,7	29,6	30
Declared maximum internal leakage rate of the casing of ventilation units		N.A.	N.A.	N.A.	N.A.
Declared maximum external leakage rate of the casing of ventilation units		N.A.	N.A.	N.A.	N.A.
Energy performance energy or classification of the filters	-	N.A.	N.A.	N.A.	N.A.
Description of visual filter warning	-	-	-	-	-
Casing sound power level	LWA [dB(A)]	53	48	51	51

* RVU-U: Unit Ventilation Residential - Unidirectional
 ** NRVU-U: Unit Ventilation Non Residential - Unidirectional
 *** MSD: Multi-Speed Drive

DIMENSIONS

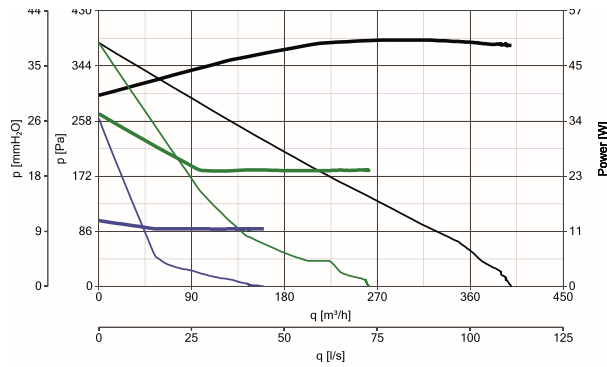


Models	A	B	C	Ø D	E	F	Ø G	H	L
CA 100 MD W EP	334	334	210	97	304	304	5	5	15
CA 125 MD W EP				122					23
CA 150 Q MD W EP				147					30
CA 150 MD W EP	424	424	245	147	394	394	5	5	17
CA 160 MD W EP				157					18
CA 200 MD W EP				197					20
CA 250 MD W EP				237					247
CA 315 MD W EP	489	489	260	312	459	459	5	5	36

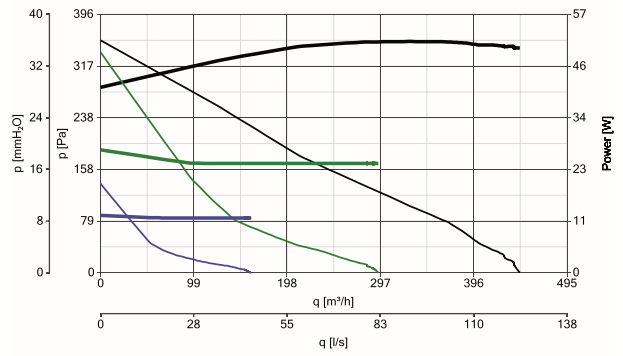
Dimensions (mm)

PERFORMANCE CURVES

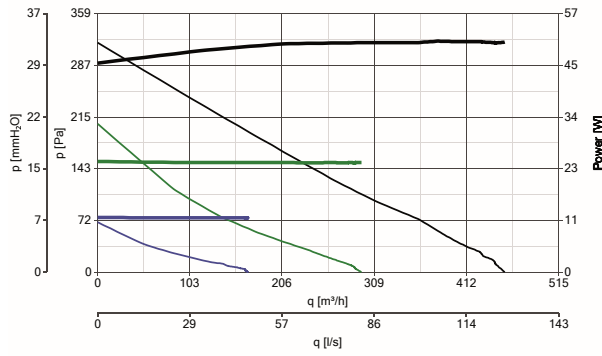
CA 100 MD W EP Cod. 16229



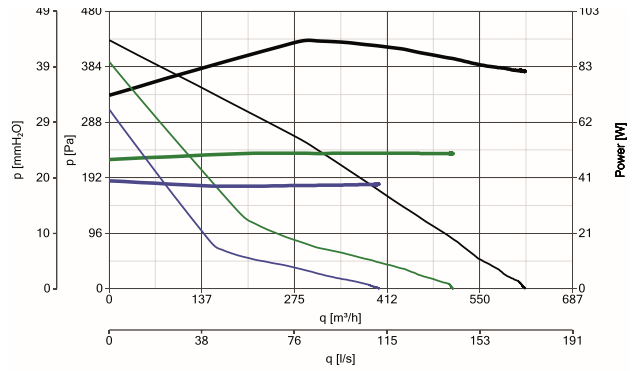
CA 125 MD W EP Cod. 16230



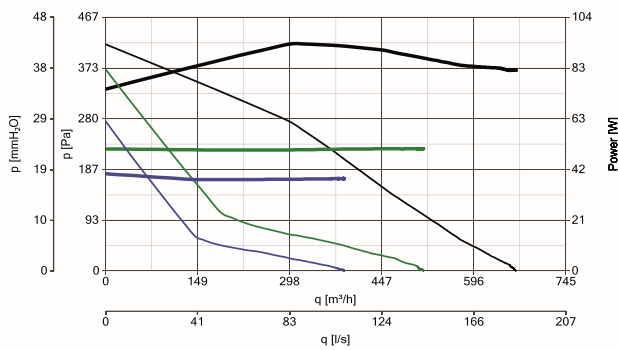
CA 150 Q MD W EP Cod. 16231



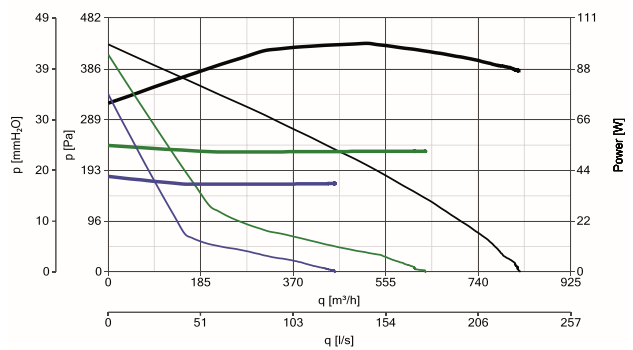
CA 150 MD W EP Cod. 16232



CA 160 MD W EP Cod. 16233



CA 200 MD W EP Cod. 16234



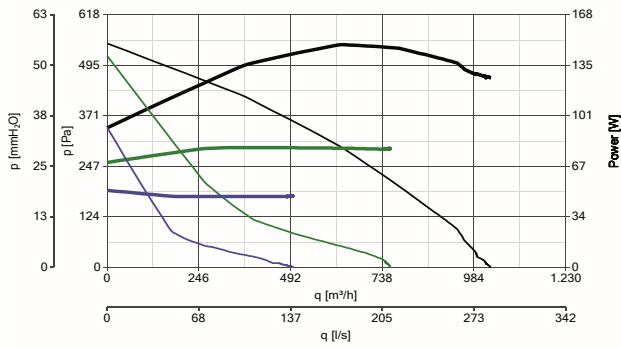


CA MD W EP RANGE

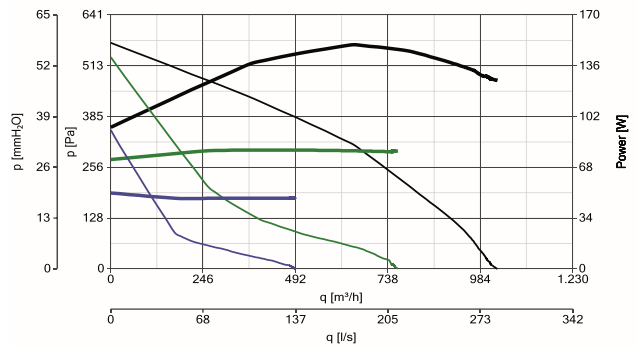
Centrifugal duct fans for wall mounting

PERFORMANCE CURVES

CA 250 MD W EP Cod. 16235



CA 315 MD W EP Cod. 16236








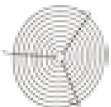
POWER CONSUMPTION

- max
- med
- min

PERFORMANCE CURVES

- max
- med
- min

PRODUCT ACCESSORIES

	Description	Code	Product
	C HCS Environmental sensor for humidity	12994	All products
	C PIR Passive infrared sensor	12998	
	C SMOKE Environmental sensor for air quality	12993	
	C TEMP Environmental sensor for temperature	12992	
	C TIMER Adjustable over-run timer	12999	
	CA-G 100 Protection grille nominal diameter 100 mm	22750	16229
	CA-G 125 Protection grille nominal diameter 125 mm	22755	16230
	CA-G 150 Protection grille nominal diameter 150 mm	22760	16231 - 16232
	CA-G 160 Protection grille nominal diameter 160 mm	22762	16233
	CA-G 200 Protection grille nominal diameter 200 mm	22765	16234
	CA-G 250 Protection grille nominal diameter 250 mm	22770	16235
	CA-G 315 Protection grille nominal diameter 315 mm	22775	16236

Description and size on page 52; System components on page 54